

FIGURE 1. One of the static configurations of dibutyl phthalate bubbles in glycerol/water solution.

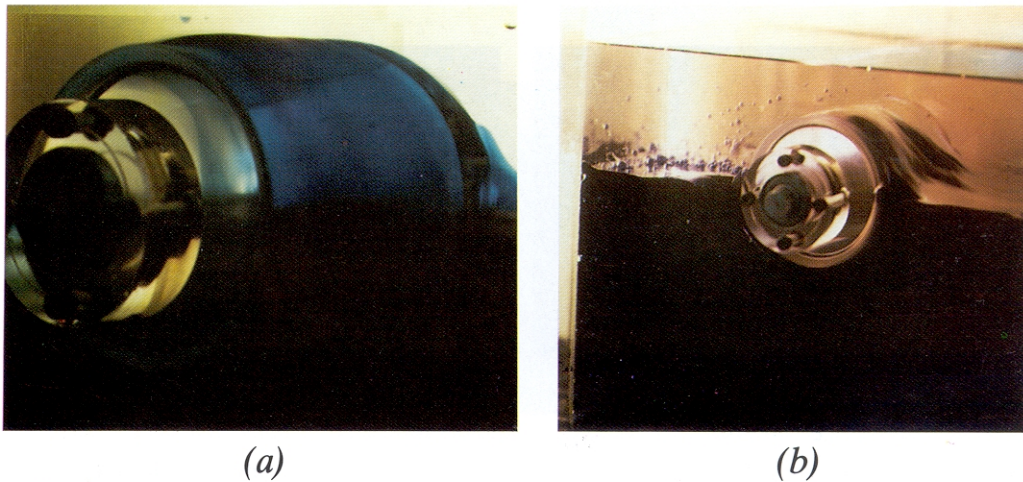


FIGURE 7. Encapsulation of silicone oil I by (a) corn syrup/water solution (blue); (b) water (blue).

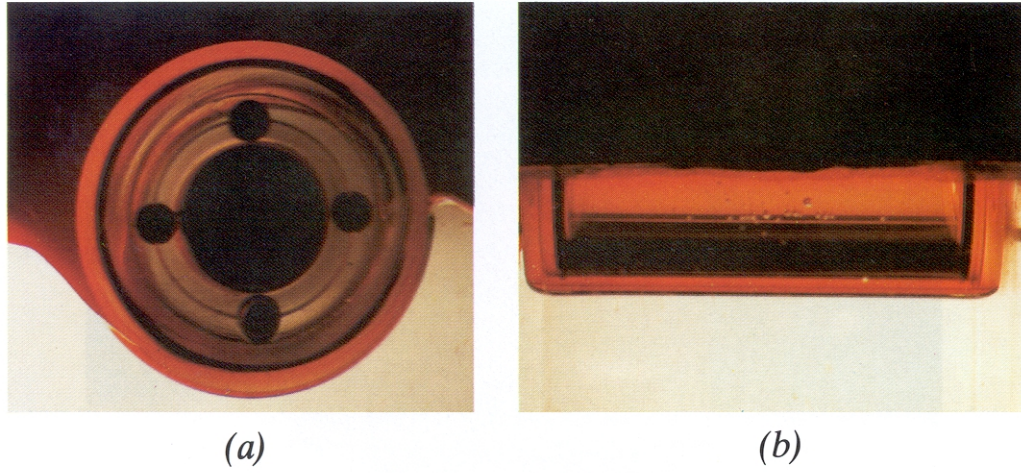


FIGURE 8. Encapsulation of glycerol (clear) by silicone oil I (red): (a) front view; (b) side view.

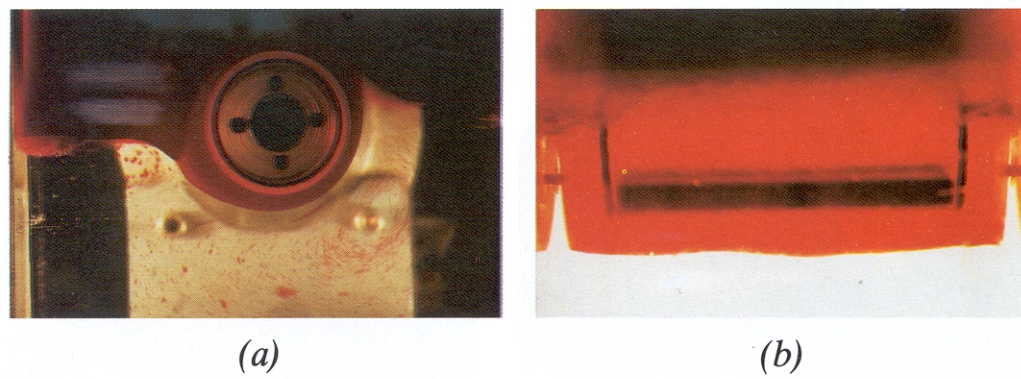


FIGURE 9. Encapsulation of glycerol (clear) by castor oil (red): (a) front view; (b) side view.

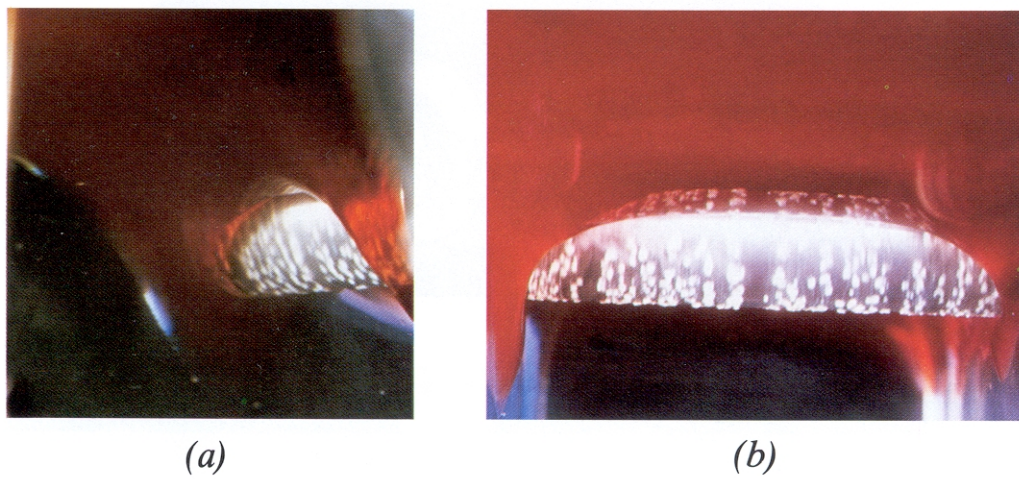


FIGURE 10. Encapsulation of silicone oil III (red) by water (clear): (a) back view, looking at an angle from below; (b) side view.

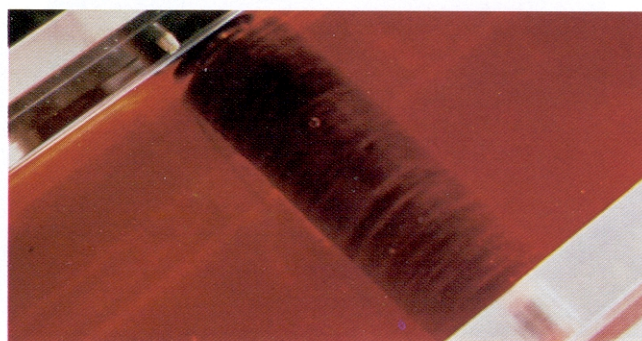
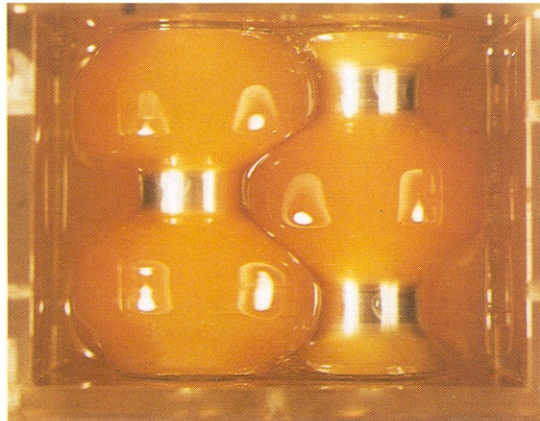
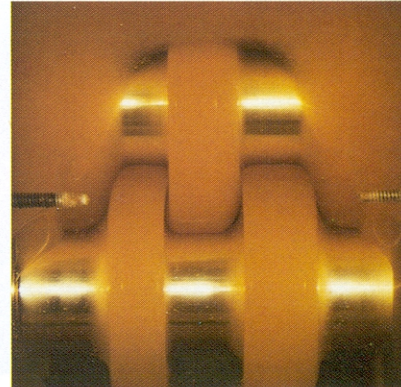


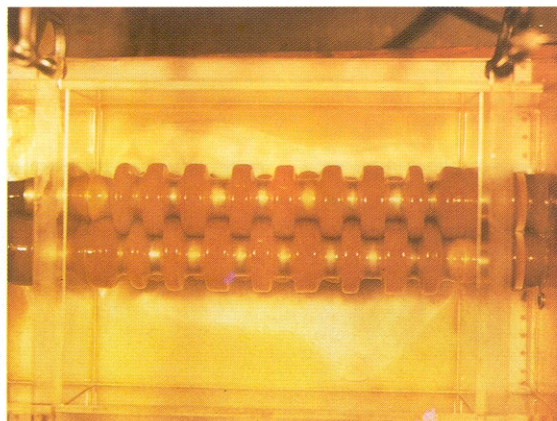
FIGURE 11. The same experiment as in figure 10, but with the silicone level below the rod.



(a)



(b)

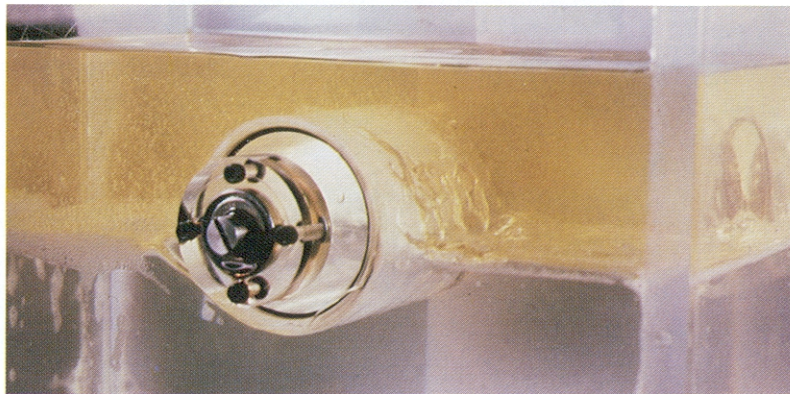


(c)

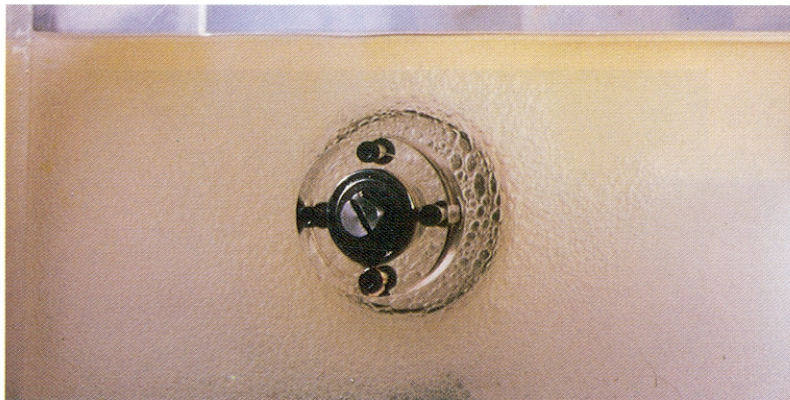
FIGURE 18(a,b). Interpenetrating rollers of STP and water in a 4-roller apparatus: (a) top view; (b) side view (the clear parts are water). (c) Interpenetrating rollers on two cylinders rotating in opposite directions.



(a)



(b)

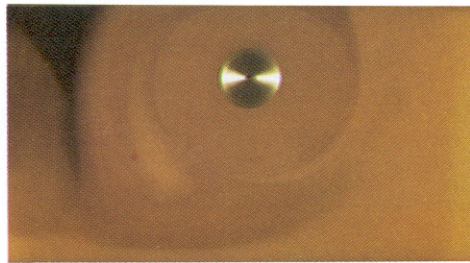


(c)

FIGURE 19. Light machine oil ($\rho = 0.831 \text{ g/cm}^3$, $\mu = 6.36 \text{ cP}$, yellow) on water. (a) Rod rotates counterclockwise at 115 r.p.m. (b) Rod rotates at 195 r.p.m. (c) Emulsion of water in light machine oil at 300 r.p.m.



FIGURE 21. A combination of emulsion and sheet coating of 1% polyacrylamide/water (blue) in castor oil (yellow).



(a)



(b)

FIGURE 22. *(a)* Emulsion of STP (dark brown) in TLA 227 (light brown). *(b)* Emulsion of STP in TLA 227.

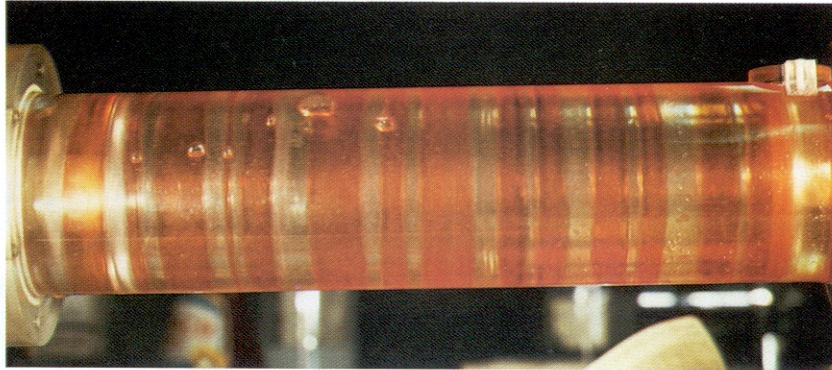


FIGURE 26. Rollers of silicone oil I (red) separating Taylor cells of water (clear).

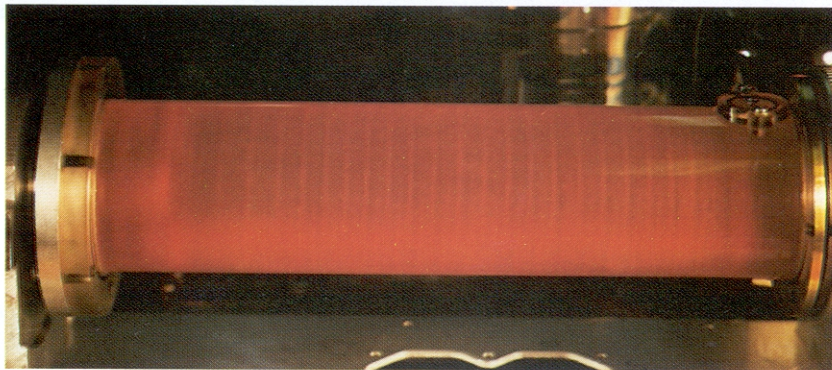


FIGURE 27. As in figure 26, but with much higher angular velocity.

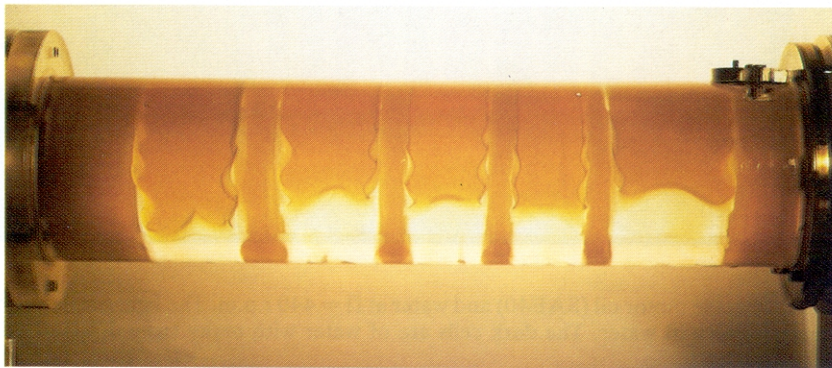


FIGURE 28. Rollers of STP (orange) separating Taylor cells of water (clear).

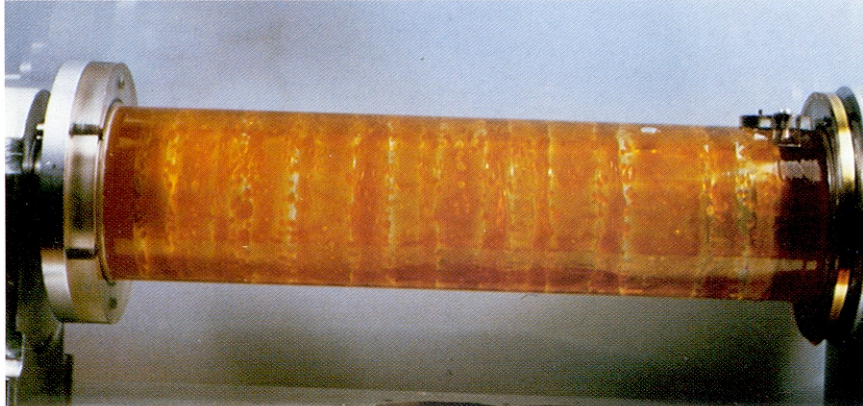


FIGURE 29. Monograde motor oil (brown) and water (clear).

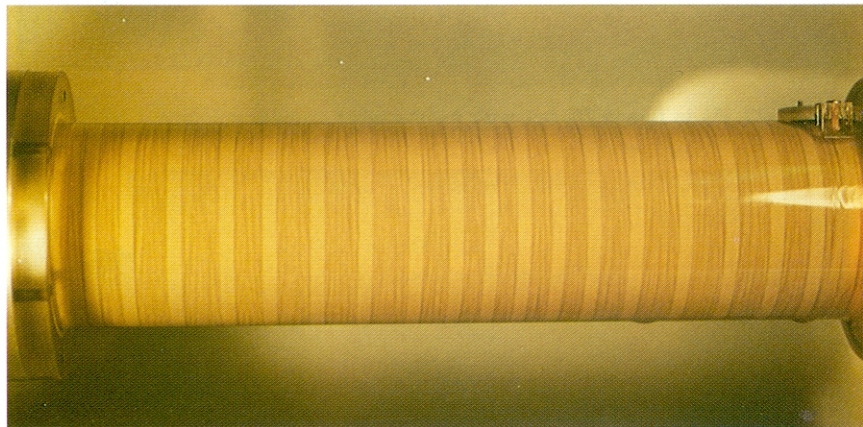


FIGURE 30. Monograde motor oil (SAE40) and water at $\Omega = 440$ r.p.m. The light cells are emulsions of oil with small droplets of water. The dark cells are of water with many large drops of oil.